



Piezoelectric Accelerometer (High Temp)

Model: CA-YD-136

Manufacturer: Sinocera Piezotronics Inc.

Distributor: LABSEN

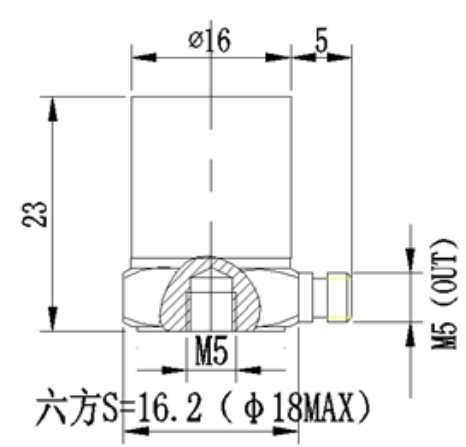


Features:

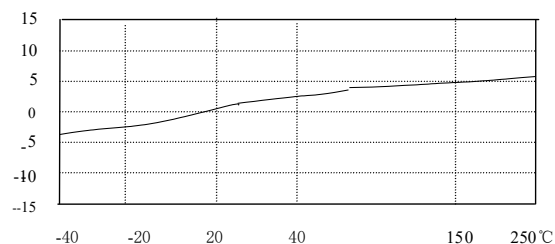
- High temperature compressed structure
- Wide temperature range, stable

Specifications:

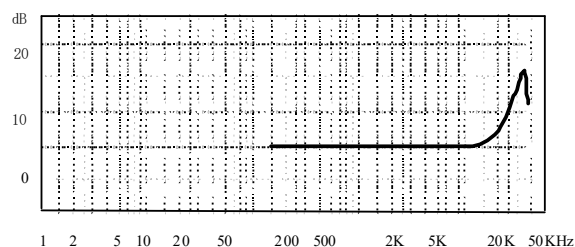
Sensitivity (20±5℃)	~3 pC/g
Measurement Range(pk)	1000 g
Max Transverse Sensitivity	≤5 %
Frequency Response (±5%)	2 ~10,000 Hz
Mounting Resonant Frequency	35,000 Hz
Operating Temp. Range	-40~+250 °C
Temperature Response	See Graph
Shock Limit(pk)	3,000 g
Transient Temperature Response	80 mg/°C(0.3Hz)
Magnetic Sensitivity	1 g/T
Base Strain Sensitivity	2 mg/με
Insulation resistance (two cores)	> 10 ⁹ Ω
Capacitance	~1,000 pF
Mounting	M5
Sensing Element	BST
Sensing Geometry	Central compressed
Case Material	Stainless steel
Weight	29 g
Output	L5
Accessories	
Certificate	Calibration Parameter, frequency response
L5/L5 STFF-0.9(2m)	one



Dimensions



Temperature Response



Frequency Response

LABSEN® - Laboratory and Sensor Technologies

25/15 Bellevue Terrace Street
Saint Lucia, QLD 4067, Australia

ABN 41 242 801 624
<http://labsentec.com.au>

Email: enquiry@labsentec.com.au
Phone: +61 468 468 988